



# SQS

*Southern Quality Solutions Ltd*

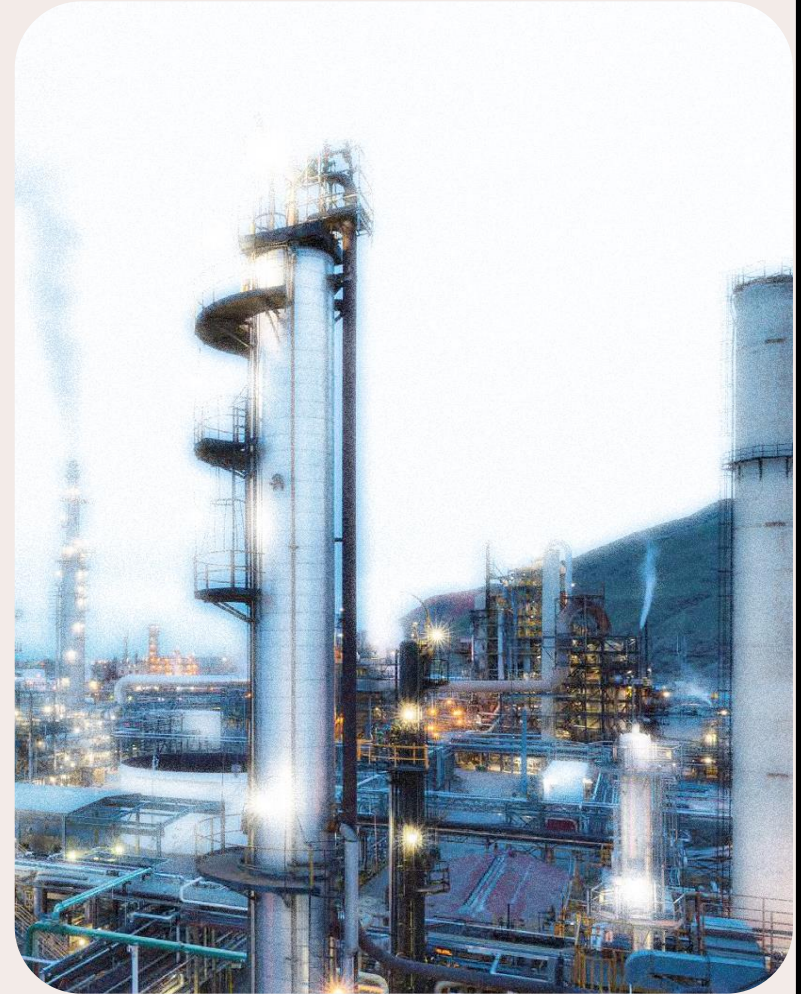
**Contact Us:**

**Address: No. 49, Gilpin Avenue,  
Gloucester, Gloucestershire, UK**

**Postal Code:GL33DD  
WWW.S-Q-S.CO.UK**

**Mail: [Coordinator@s-q-s.co.uk](mailto:Coordinator@s-q-s.co.uk)**

**Tel: +44(0)7828033724**



## About Us



At Southern Quality Solution, we provide 3<sup>rd</sup> party inspection services around the world ranging from sophisticated Oil and Gas equipment to various applications within the Food and Agricultural applications, thanks to our diverse and experienced team of inspectors.

Our headquarters are tactically located in the United Kingdom providing us access to a wide range of highly qualified inspectors across the globe providing seamless support to buyers and their supply chain.

The services we offer include inspection services at the EOMs, pre-shipment and during shipment inspection, confirmation of product originality, supplier audit and other inspection services tailored to the needs of our clients.



## About Us:



### Mission:

To provide further assurance on product quality for our clients through independent, impartial and confidential 3<sup>rd</sup> party inspection on their purchased goods and services.

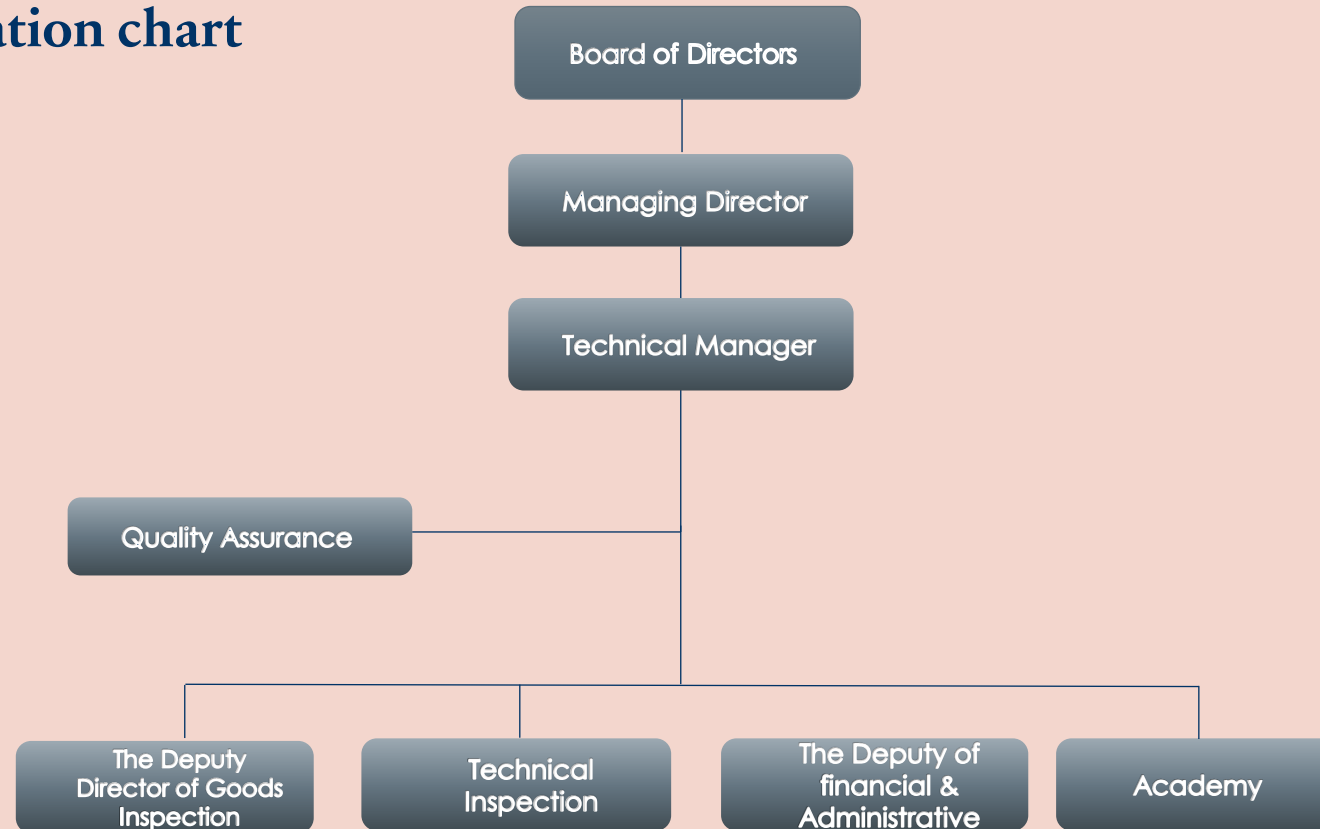
### Vision:

An independent, agile inspection company, providing quality inspections at a competitive cost, providing a wide variety of inspection services to clients in various sectors worldwide.

### Values:

Independency  
Impartiality  
Confidentiality  
Customer Orientation  
Entrepreneurship and innovative spirit

# Organization chart



# Accreditations and Certificates:

## Management System Certificates:

ISO/IEC 17020:2012 Conformity assessment- requirements for the operation of various types of bodies performing inspection.

ISO 9001:2015 Quality Management system

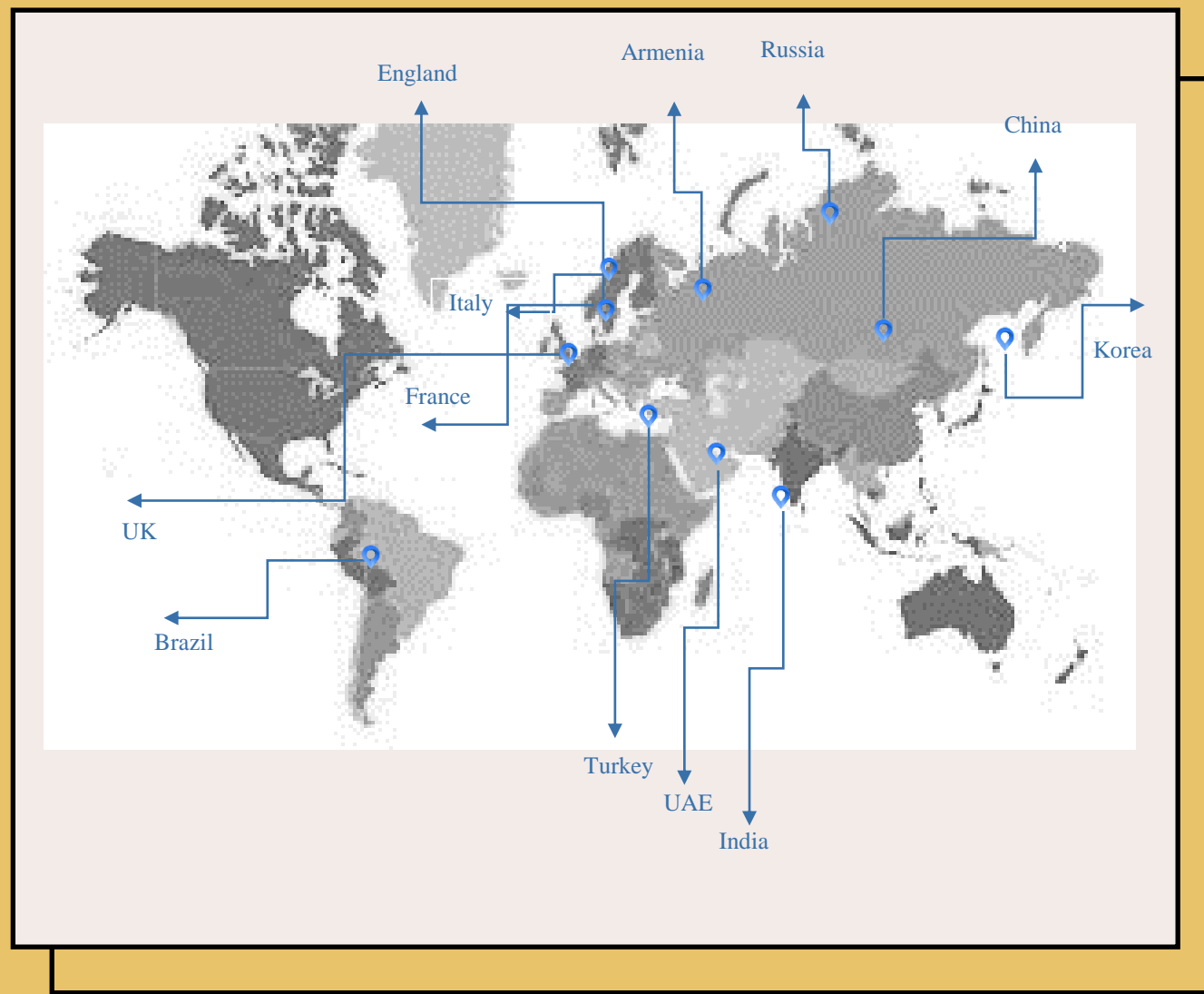
ISO 10015:2019 Quality Management, Guidelines for Training

ISO 14001:2015 Environmental Management System.

ISO 45001:2018 Occupational Health and safety Management



**Southern Quality Solution is actively involved in these locations:**



## Our Inspection Services:



## Our Inspection Services:

### Third party Inspection

Third Party Inspection of shop manufacturing of mechanical (pressure vessels, boilers, line pipes, welded structures, steel structures, machinery, pumps, compressors, Drilling material, etc.) and electrical components (transformers, control panels, cables etc.) and instruments acc. to relevant code and client specifications.

We provide these services to our customers around the world at a very competitive cost and with fast response time.





## Our Inspection Services:

### Material and Goods Inspection

A Material Inspection is the process of examining and evaluating the physical and chemical properties of material to establish it meets specific standards, specifications, or quality.

Pre-shipment inspection services are designed to protect the interests of buyers in their international purchasing programs. Intervention is an essential part of an international transaction where documented proof of quality and quantity are required as part of the payment terms.

Due to our network, which covers the main key trading centers of the world. Our specialists are dedicated to provide those independent quality and quantity surveillances for our clients. These services commence at the production stage - or even earlier - and continue through to the final checks prior to shipment.



## Our Inspection Services:

### Second Party Inspection:

- We provide inspection and quality control services on behalf of our clients (also known as Vendor Inspection) to verify purchased items against the relevant specifications and client purchase order requirements



### Expediting Services for industrial Projects

- With numerous suppliers involved in your supply chain, keeping your projects on schedule can be a challenge. Delayed delivery of materials, products or equipment prevents your project from being completed on time and on budget. Our expediting services keep your project firmly on schedule by ensuring that your suppliers deliver on time and in full.



## Agricultural Products inspection Services:

- inspection and sampling of the bulk and packed food, animal and agricultural products
- Sampling the cereals based on GAFTA rules
- Sampling the oil and liquids based on FOSFA rules
- Testing result review and its conformity with the relevant international standards
- Damage survey, inspection of container and vessel storages
- Supervision on vessel storage fumigation, inspection of storage sealing
- Draft Survey, Ullage survey

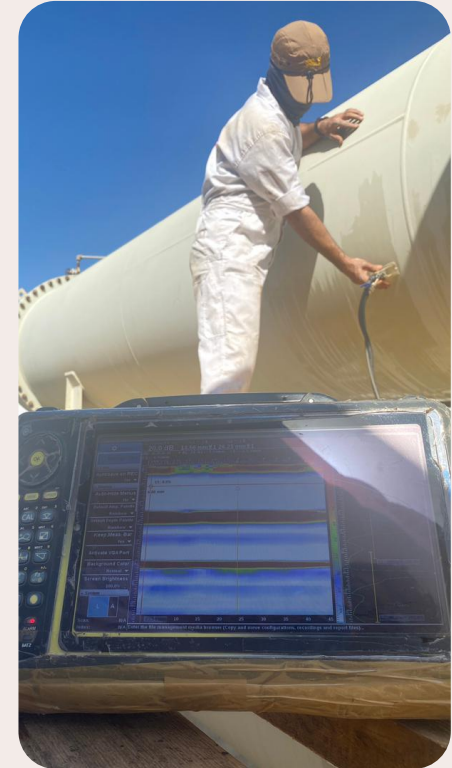


## We can provide the following NDT methods:

- Phased Array (PAUT)
- Time of Flight Diffraction (TOFD)
- Guided Wave (LRUT)
- Short Range Guided Wave (SRUT)
- Corrosion Mapping
- Magnetic Flux Leakage (MFL)
- Acoustic Emission (AE)
- Saturated Pulsed Eddy Current (SLOFEC)
- Gamma Scan
- Corrosion Management
- Pulsed Eddy Current (PEC)
- Eddy Current (ET, RFT, IRIS)
- NDT(UT, PT, MT, VT, RTI)

## FFS & RBI

- Corrosion management software
- Asset integrity management
- RBI
- FFS
- ECDA/ICDA
- Failure analyzer
- Corrosion management



## Personnel certification

We provide operators certification for:

- Welder and Welding Operators (acc. to ISO 9606, ASME Sec. IX and AWS)
- Non-Destructive Testing Personnel (acc. to EN ISO 9712 / ASNT) in,
  - Radiographic Film Interpretation
  - Ultrasonic Inspection Level 1, 2
  - Magnetic Particle Inspection Level 1, 2
  - Liquid Penetrant Inspection Level 1, 2
  - Visual Inspection Level 1, 2



## Periodical Inspection



Periodical Inspection of Steam Boilers, Pressure Vessels, Steam Boilers, Air Tanks, Compressors etc.

Regulatory Inspections

Functional and Safety Tests

Non-Destructive Tests

Pressure Tests

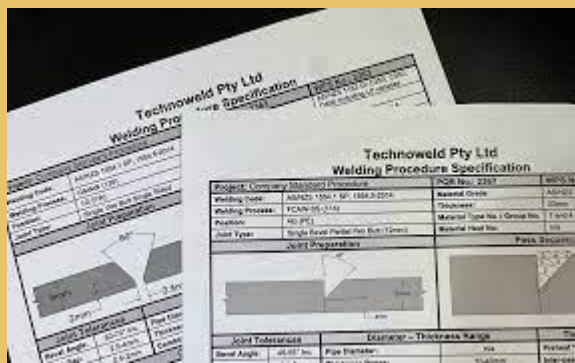
Periodical Inspection of Lifting Equipment such as Cranes, Lifts, Hooks, Slings, etc.

- Regulatory inspections
- Non-destructive Tests
- Load tests



## Providing WPS& PQR:

Well Qualified Welding engineers at SQS can prepare and review of Welding Procedure Specification, Qualification of Procedure Qualification Record and Welder Qualification for structures, equipment, etc. used in different sectors for GTAW, SMAW, SAW, GMAW, SAW and other welding process. Qualification is to ensure that the welding procedures are qualified by the fabricator prior to the application on the job, in accordance with the Codes, Standards, Specifications and Customer requirements.



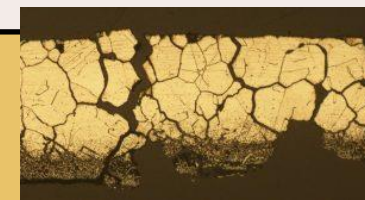
## Material Selection:

At SQS, we focus on assisting clients with material selection processes to ensure that the most reliable and economic materials are chosen for a particular application. Our engineers use their diverse, in-depth experience and an assortment of testing and inspection methods to efficiently acquire the crucial data needed for practical material selection and qualification. The operating environment—temperature, corrosion, stress, and strain—can profoundly affect the life of a specific material. Making the right choice in materials can be hugely beneficial to the bottom line, but making the wrong choice can be costly and even dangerous. Our experienced team can provide the skills and technology to help avoid the potentially staggering costs of project delays, in-service failures, warranty claims or recalls..



## Metallurgical Failure Analysis:

Failure analysis is the process used to evaluate metal components to determine the reason for product and equipment failures and manufacturing quality problems. We have experience with a wide range of materials and industries. We help clients with failure analysis and root cause analysis of problems related to the metals used in their products and equipment. This involves examining fracture surfaces, corrosion deposits, or material characteristics and comparing the observations with background information such as known service conditions (applied stresses, temperature, or exposed chemicals), mill test reports and associated specifications, or any relevant background data regarding the failed component



## Sample of our previous projects:



Europe		
Country	Factory	Subject
Germany	GLES Global Logistic Co.	Gear Oil Pump
	BUSH	CCTV monitor inspection
	BORSIG	Compressor inspection
	S+R automation systems GmbH	Electrical actuator of movable chute
	Helcko	CPC
	PRIMUS	DRESSER
	GRP Technique	Actuator Rotork
	G.I.C	Wire Rope
	ARAKO	Spare Cartridge
	CHETRA	Mechanical Seal
	AREXON	Compressor Spare Parts
	GermanTwinscrewS GmbH	Screw
	Schütte Industrieservice GmbH	Gate Valve
Italy	GALACTIC	Valve inspection
	ORION	Gate Valve inspection
	Best Lift s.r.l.	Parts for LINDE
	Delta valvel	Valve Inspection
	GALACTIC	GIBSON
	ME ACCESS	CENTRIFUGAL PUMP
	Tesar	Trans
	B4U	PUMP
	Bitax	PUMP

## Sample of our previous projects:

Europe		
Country	Factory	Subject
	ASCESS	Universal Joint
	Cormorant Oil	polymer
	Altatec	Agitator
	NUOVO PIGONE	BOIL-OFF COMPRESSO
	GALBIATI SPA	gearbox extruder
	Qassoumeh LLC	Transmitter
Spain	ITC	Dozing Pump
	GHO	Crane
	Kauman CO	CONVOYOR BELT
	Dian	Valve
France	Trade MAX CO FZE LLC	Filter Press
Turkey	J+G Refractories	RAW MATERIAL - REFRACTORY
	MIM-MAK Makina Imalat Montaj San. Tic. Ltd. Sti.	Liquid Tank
	İdeal Makina Endüstri Ürünleri San. ve Tic. A.Ş.	Nitrogen Generator
	AKYAPAK	DRILLING MACHINE
	SunniYA	Safety Valve
	ALM	Manganese Ethylene
NETHERLAND	CONTROL SEAL INTERNATIONAL BV	Stem Guide
	Noorin Polymer	Hexene-1
England	Filton Engineering Ltd	Turbine Flowmeter
Portugal	ARSOPI-THERMAL	Heat exchanger



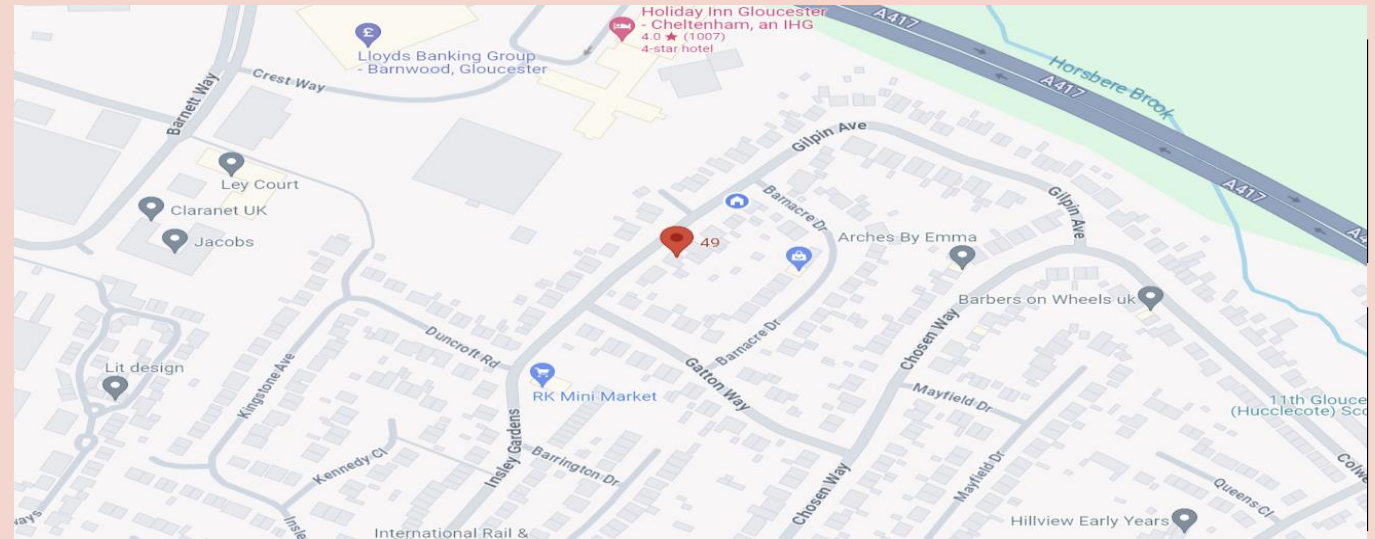
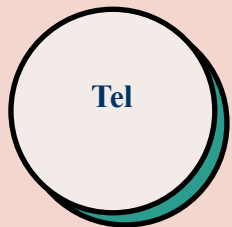
## Sample of our previous projects:



Europe		
Country	Factory	Subject
Turkey	J+G Refractories	RAW MATERIAL - REFRACTORY
RUSSIA	RIMERA-ALNAS LLC	Control stations
	Nefteservice	PUMP
	Avtokravt	Drilling Rigs
	Specneftemash LLC	BOP
Croatia	OMV	Valve
Hungary	Aerzen	Spar parts of pump
AUSTRIA	Smidth	Inlet Nozzles
Africa		
South Africa	KSB	Slurry PUMP
	MALVERN	Belt Magnet
	ROYTECH	Hydraulic Power Pack
America		
USA	OMC	Agricultural Machines
	EXACT	Agricultural Machines
	GCI packaging	Resin Packaging
BRAZIL	Port of Santoz	Agricultural products

## Sample of our previous projects:

ASIA		
Country	Factory	Subject
India	M/s. Triveni Turbine Limited	Turbine Blower
	M/s Amines & Plasticizers td	AMINOSOL
	Olsa	Carbon Black
	ALOTECH	CALCIUM STEARATE
Kora	Aztech CO.	F&G
	POM	Piping Material
	NPA industry Co	Radiant coil
	HYDRO ROTARY EQUIPMENT	OH2 Pump
	Hebei Yuanke Pipeline manufacturing co. Ltd	Carbon Steel Pipe
	ZMI	Cylinder
	MXE Chem	irgafox
	HILAVIS	PLATE
	SILVER FORCE	ANTIOXIDANT
	DANES COLOR	GATE VALVE
	Poly Promo	Antistatic
	Danes trading	gate valve
	Energy Solution	Rod
	Poly Promo	Donor C
	ALM	Cylinders
	Rocky Zhang	Rod
CAPPCO	Transducer	



**Address: No. 49, Gilpin Avenue, Gloucester,  
Gloucestershire, UK, GL3 3DD**

**WWW.S-Q-S.CO.UK**  
**Coordinator@s-q-s.co.uk**

**+44(0)7828033724**



**SQS**

*Southern Quality Solutions Ltd*